



LSI Consulting™

We can see your solution from here.



SAP Upgrade Project

May 16, 2007



Presented by:
Shyam Jajodia
Bruce Bellemore

THE BEST-RUN E-BUSINESSES RUN SAP

LSI Introduction - “Who are we?”

- Founded in 1998
- Full coverage of public sector
 - State & local government
 - Higher education
 - Healthcare
 - K-12
 - Federal
- SAP Focused
- Solid reputation
“The consultants’ consultants”



LSI Introduction - Our Customers



HEALTH AND HOSPITAL
CORPORATION
OF MARION COUNTY



UNIVERSITY OF KENTUCKY



MARION COUNTY
HEALTH DEPARTMENT
Leading a difference.

WISHARD
HEALTH
SERVICES
*The heart and science
of health and healing.*



IRS

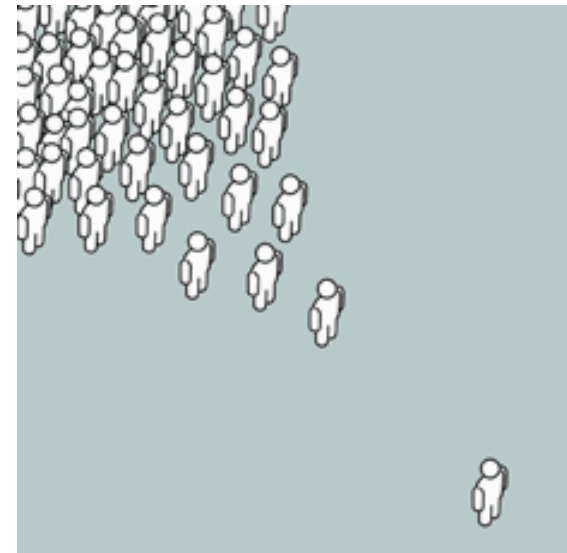
Department of the Treasury
Internal Revenue Service

www.irs.gov



Why LSI

- 100% SAP Public Sector focus
- Roots in the public sector
- Credibility - “PROVEN”
- Tools – Best Practice System
- “The consultants’ consultant”
- Certified SAP Partner



LSI – State and Local Credentials

- 9 Years in Public Sector
- First Local Government Project - City of Phoenix
- First public sector training course
- Published - Journal of Government Financial Management
- ASUG Presentations



HEALTH AND HOSPITAL
CORPORATION
OF MARION COUNTY



MARION COUNTY
HEALTH DEPARTMENT
Leading a difference.

WISHARD
HEALTH
SERVICES

*The heart and science
of health and healing.*



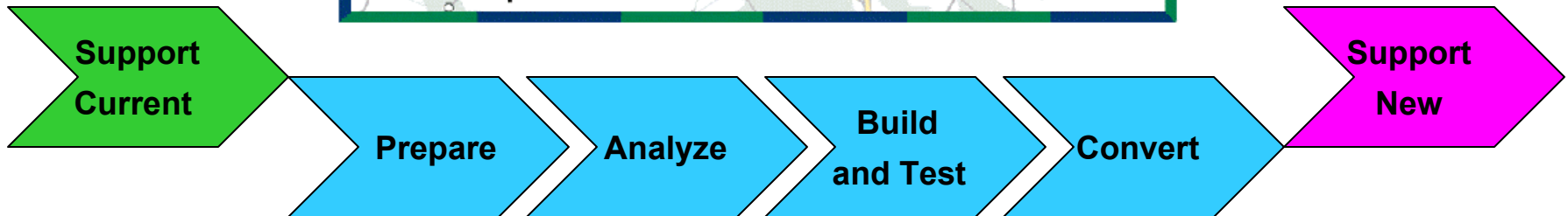


LSI – Total Cost Reduction

- Do it right the first time
- No on the job trainees
- Consultants from public sector
- Phase in as needed
- Best Practice Configuration
- Knowledge transfer
- Long term support contracts



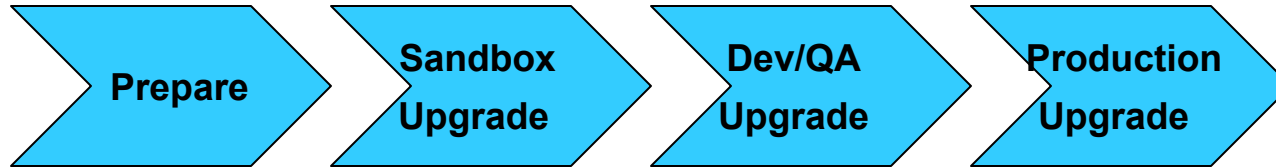
LSI Approach - Lifecycle



- Project Plan
- Staffing
- Landscape
- Hardware
- Sandbox upgrade
- Unit testing
- Failure Analysis
- Changes Needed
- Test planning
- Configuration
- Tech development
- Integration testing
- Acceptance testing
- Cutover planning
- User Training
- Data Conversion

“Improve Continuously”

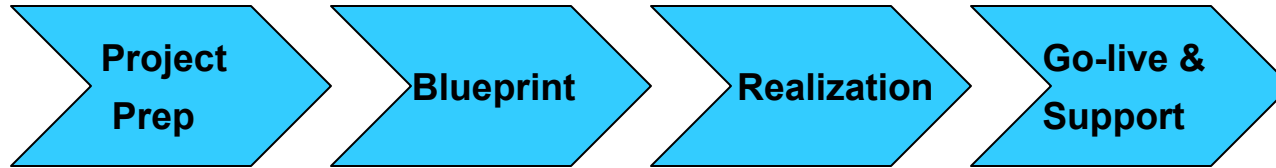
LSI Approach – Technical Upgrade



- | | | | |
|--|--|---|---|
| <ul style="list-style-type: none"> • Sizing • Obtain Hardware • Minimize Clients • Create Sandbox • Obtain Software | <ul style="list-style-type: none"> • Perform upgrade • Enter transactions • Identify issues • Identify changes • Document changes • Plan for Developmt | <ul style="list-style-type: none"> • Perform upgrade • Perform changes • Transport changes • Test changes • Convert custom developments • Develop/execute testing | <ul style="list-style-type: none"> • Perform upgrade • Transport changes • Convert data • Identify issues • Resolve issues |
|--|--|---|---|

“Repeat until Perfect”

LSI Upgrade Approach – New Functionality



- Goals
- Benefits
- Scope
- Phasing

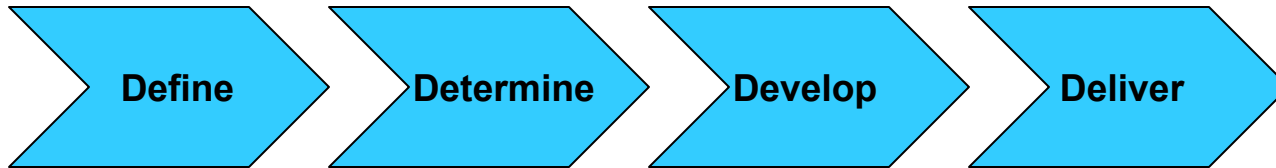
- Requirements
- Configuration
- RICES
- Organizational

- Final configuration
- Tech Developmt
- Acceptance Testing
- Integration Testing
- Security Testing

- Train Users
- Convert data
- Go-live
- Resolve issues
- Stabilize system

“Best Practice Design, Thorough Testing”

LSI Upgrade Approach – Knowledge transfer



- | | | | |
|----------------------------------|--------------------|-------------------------|---------------------|
| • Define areas | • Identify changes | • Perform changes | • Deliver training |
| • Assign players | • Understand | • Test changes | • Assist users |
| • Identify Trainers and trainees | • changes | • Develop user training | • Understand issues |
| | • Document changes | | • Resolve issues |

“Learning by Doing”



LSI Consulting™

We can see your solution from here.



Thank You!!

THE BEST-RUN E-BUSINESSES RUN SAP